

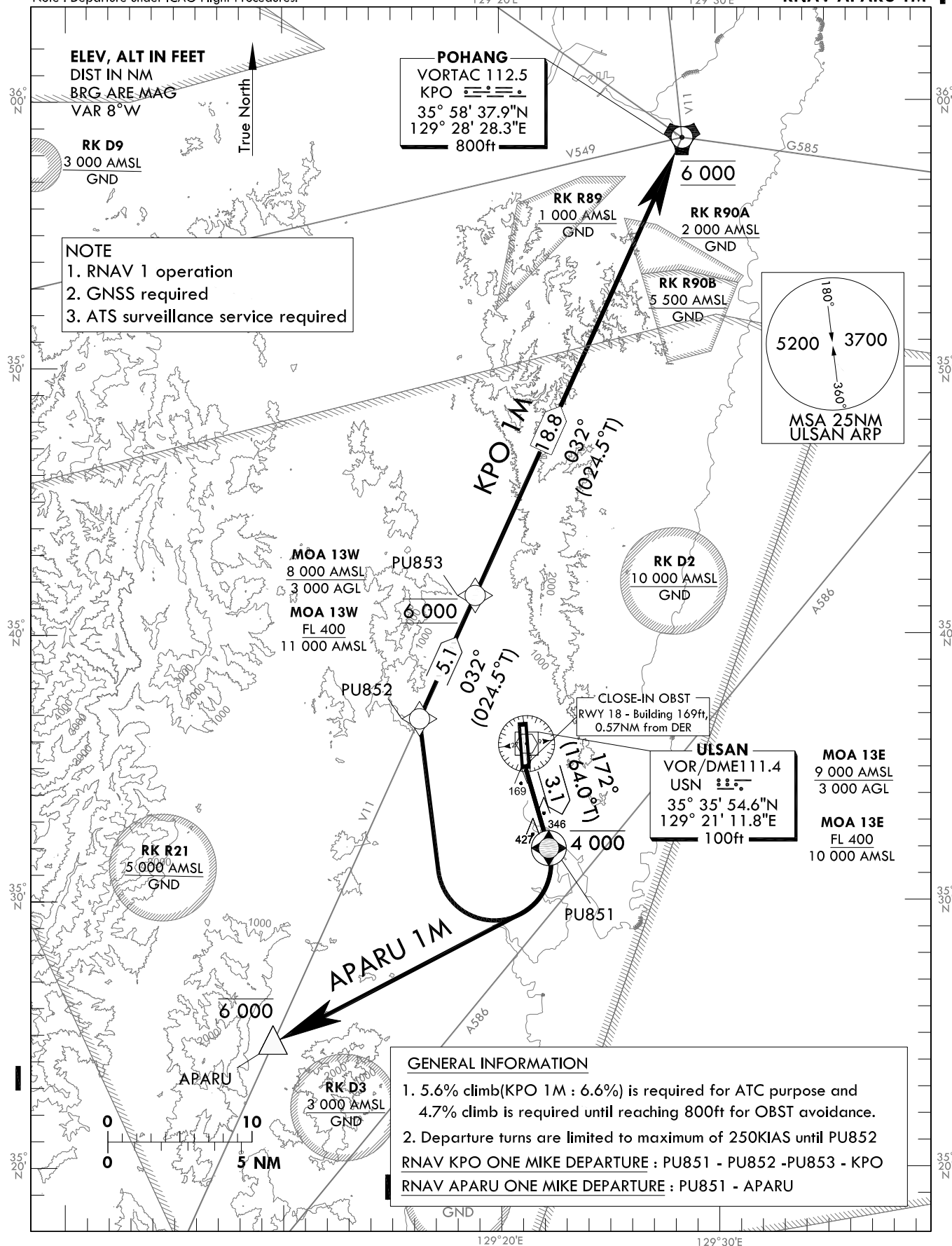
STANDARD DEPARTURE CHART
INSTRUMENT(SID) - ICAO

TRANSITION ALT 14 000
TRANSITION LVL FL 140

POHANG DEP 120.2
232.4
ULSAN TWR 118.75

ULSAN/Ulsan(RKPU)
RWY 18
RNAV KPO 1M
RNAV APARU 1M

Note : Departure under ICAO Flight Procedures.



Change : Procedure name, fix name(NAMDO → APARU).

OFFICE OF CIVIL AVIATION

AIRAC AIP AMDT 6/14
Effective : 1600UTC 25 JUN 2014

ULSAN/Ulsan(RKPU)
RWY 18

RNAV KPO 1M, RNAV APARU 1M

AERONAUTICAL DATA TABULATION

Standard Instrument Departure Procedure Coding Tables

RNAV KPO 1M

Serial Number	Path Descriptor	Waypoint Identifier	Fly-over	Course/Track °M(°T)	Distance (NM)	Turn direction	Altitude (ft)	Speed (kt)	Coordinates	VPA/RDH	Navigation specification	Remarks
001	CF	PU851	Y	172(164.0)	3.1	-	-4 000	-250	353159.3N 1292212.1E	-	RNAV 1	-
002	DF	PU852	-	-	-	R	-	-250	353651.2N 1291616.8E	-	RNAV 1	-
003	TF	PU853	-	032(024.5)	5.1	-	@6 000	-	354128.6N 1291851.5E	-	RNAV 1	-
004	TF	KPO	-	032(024.5)	18.8	-	@6 000	-	355837.9N 1292828.3E	-	RNAV 1	-

RNAV APARU 1M

Serial Number	Path Descriptor	Waypoint Identifier	Fly-over	Course/Track °M(°T)	Distance (NM)	Turn direction	Altitude (ft)	Speed (kt)	Coordinates	VPA/RDH	Navigation specification	Remarks
001	CF	PU851	Y	172(164.0)	3.1	-	-4 000	-250	353159.3N 1292212.1E	-	RNAV 1	-
002	DF	APARU	-	-	-	R	-6 000	-	352442.1N 1290932.1E	-	RNAV 1	-

Change : Procedure name, fix name(NAMDO → APARU).

STANDARD DEPARTURE CHART INSTRUMENT(SID) - ICAO

TRANSITION ALT 14 000
TRANSITION LVL FL 140

POHANG DEP	120.2
	232.4
ULSAN TWR	118.75

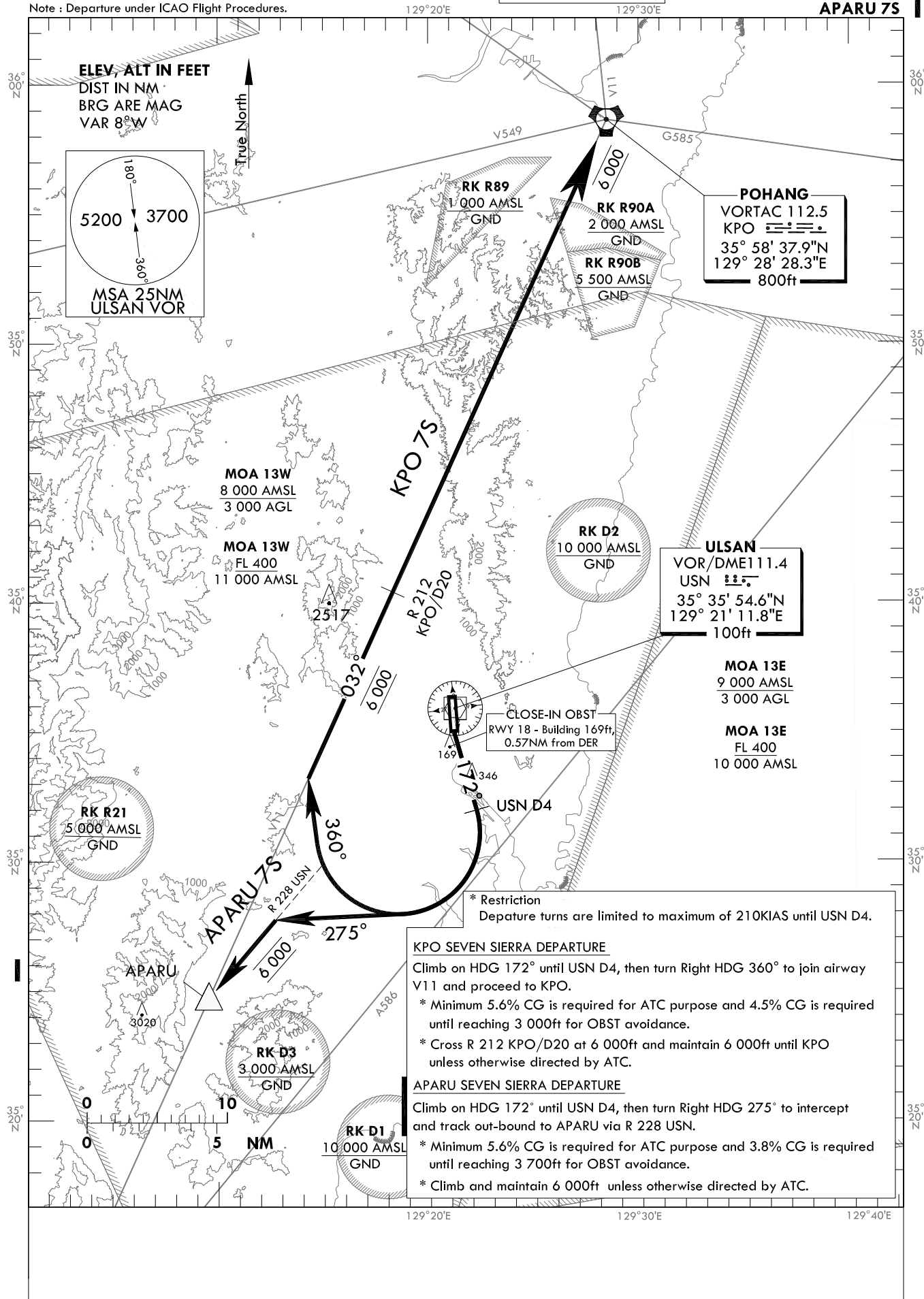
ULSAN/Ulsan(RKPU)

RWY 18

KPO 7S

APARU 7S

Note : Departure under ICAO Flight Procedures.



Change : Procedure name, fix name(NAMDO → APARU).

INTENTIONALLY

LEFT

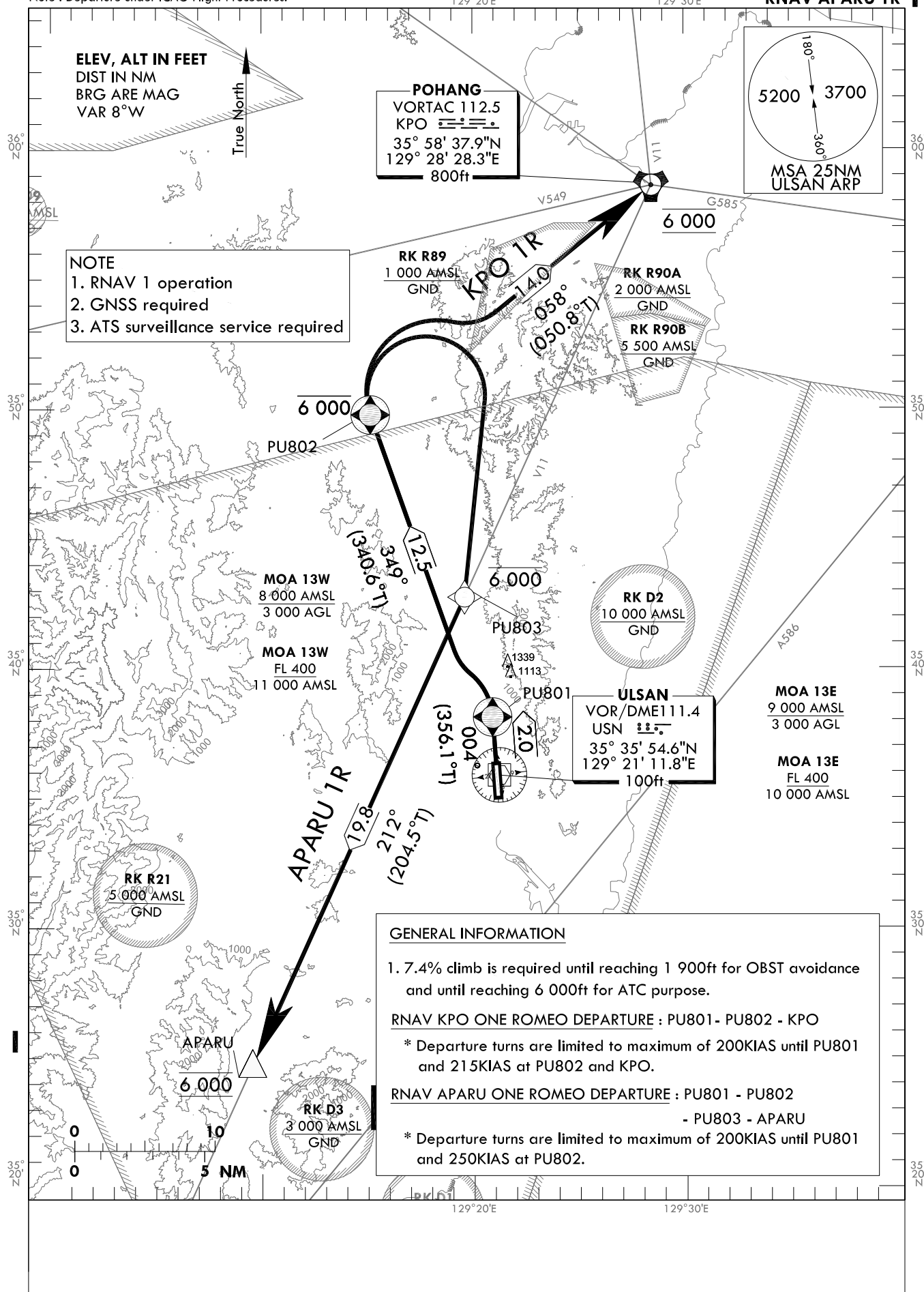
BLANK

TRANSITION ALT 14 000
TRANSITION LVL FL 140

POHANG DEP	120.2
	232.4
ULSAN TWR	118.75

**ULSAN/Ulsan(RKPU)
RWY 36
RNAV KPO 1R
RNAV APARU 1R**

Note : Departure under ICAO Flight Procedures.



Change : Procedure name, fix name(NAMDO → APARU).

ULSAN/Ulsan(RKPU)
RWY 36

RNAV KPO 1R, RNAV APARU 1R

AERONAUTICAL DATA TABULATION

Standard Instrument Departure Procedure Coding Tables

RNAV KPO 1R

Serial Number	Path Descriptor	Waypoint Identifier	Fly-over	Course/Track °M(°T)	Distance (NM)	Turn direction	Altitude (ft)	Speed (kt)	Coordinates	VPA/ RDH	Navigation specification	Remarks
001	CF	PU801	Y	004(356.1)	2.0	-	-	-200	353808.8N 1292053.5E	-	RNAV 1	-
002	CF	PU802	Y	349(340.6)	12.5	-	-6 000	-215	354948.4N 1291508.6E	-	RNAV 1	-
003	TF	KPO	-	058(050.8)	14.0	-	@6 000	-215	355837.9N 1292828.3E	-	RNAV 1	-

RNAV APARU 1R

Serial Number	Path Descriptor	Waypoint Identifier	Fly-over	Course/Track °M(°T)	Distance (NM)	Turn direction	Altitude (ft)	Speed (kt)	Coordinates	VPA/ RDH	Navigation specification	Remarks
001	CF	PU801	Y	004(356.1)	2.0	-	-	-200	353808.8N 1292053.5E	-	RNAV 1	-
002	CF	PU802	Y	349(340.6)	12.5	-	-6 000	-250	354948.4N 1291508.6E	-	RNAV 1	-
003	DF	PU803	-	-	-	R	-6 000	-	354245.9N 1291934.7E	-	RNAV 1	-
004	TF	APARU	-	212(204.5)	19.8	-	@6 000	-	352442.1N 1290932.1E	-	RNAV 1	-

Change : Procedure name, fix name(NAMDO → APARU).

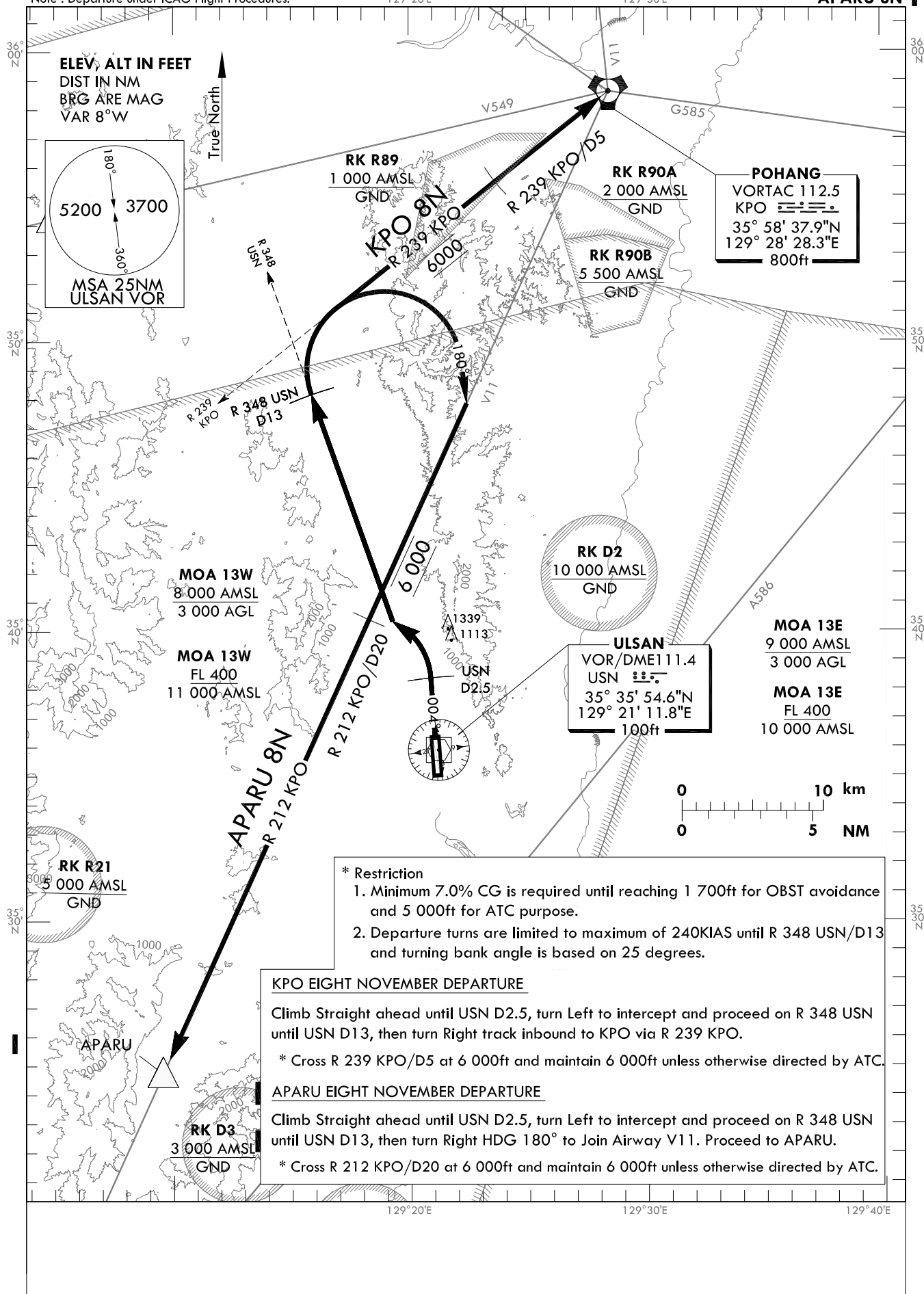
STANDARD DEPARTURE CHART INSTRUMENT(SID) - ICAO

TRANSITION ALT 14 000
TRANSITION LVL FL 140

POHANG DEP	120.2
	232.4
ULSAN TWR	118.75

ULSAN/Ulsan(RKPU)
RWY 36
KPO 8N
APARU 8N

Note : Departure under ICAO Flight Procedures.



Change : Procedure name, fix name(NAMDO → APARU).

INTENTIONALLY

LEFT

BLANK